

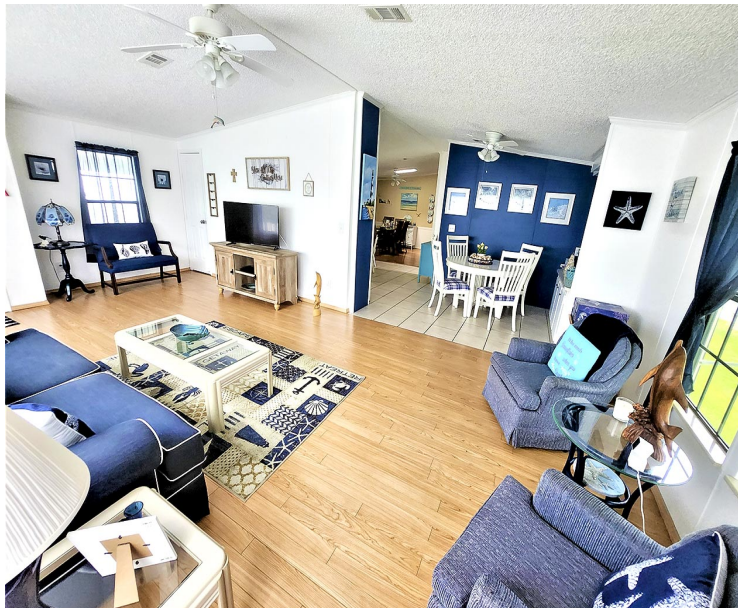


\$129,900

4736 SE BASSWOOD TERR

Pinelake Gardens and Estates

Stuart, Florida



For more information on this home, call our sales agent,
Barbara Grosenheider

772-220-6606

Gorgeous 3x2 in Pinelake Gardens

Look no further. This beautiful 3x2 is made for Florida and move in ready. Located in the beautiful community of Pinelake Gardens, this home will not last long. The home comes complete with all furnishings, hardwood floors, upgraded kitchen, and two car carport. Located in a quiet neighborhood in Stuart, this home is located minutes from ocean dining, beaches, and shopping.

Square Footage *	1560 Sq. Ft.
Bedrooms	3
Baths	2

Community Features:

- Bocce Ball Court
- Clubhouse (2)
- Community Kitchen (2)
- Courtesy Community Patrol
- Fishing Pond (3)
- Fitness Center
- Library(2)
- Organized Activities
- Pickleball

Enjoy Life at Its Best

www.HometownAmerica.com/PinelakeGardensAnd

Square footage is approximate and may include covered porches.

